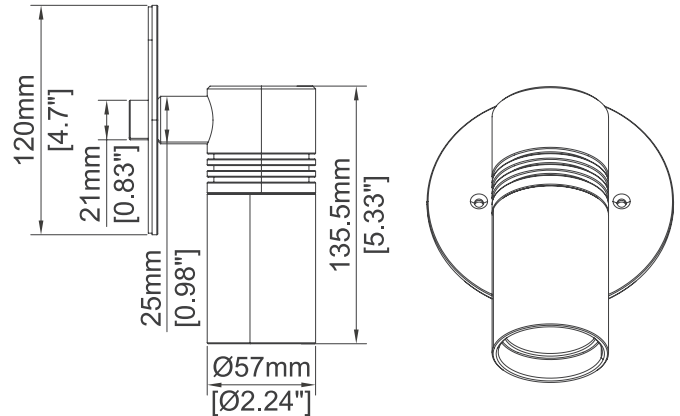
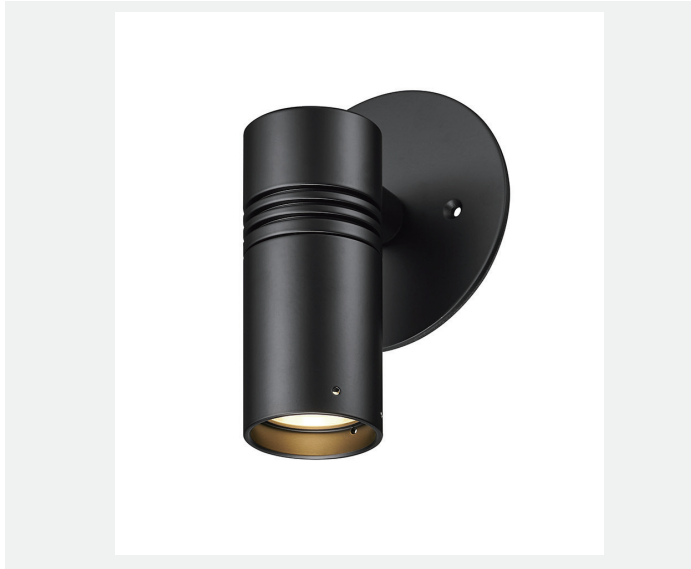


Specification sheet

REV.1

CLSFL460
Outdoor, Line Voltage



Description

Elevate your outdoor space with MACRON Light's extensive of lighting solutions. From ceiling surface, wall surface-mounted, and even floor surface-mounted options. We promised waterproof IP67, outdoor-rated powder coat finishes and 4 different beam angles. We have the perfect fixture for your outdoor needs.

Features

| | |
|--------------------------|---|
| LED | Bridgelux V10 |
| Color temperature | 2700K/ 3000K/ 3500K/ 4000K |
| Optics | Spot 22° / Medium 32° / Wide 43° / Flood 53° |
| Driver | Integrated class 2 driver, power factor >0.90 Output current 150mA |

Performance

| | |
|--------------------------|---|
| Delivered output | Up to >600lm(90+ CRI) |
| Power consumption | 6.5W , >95LM/W |
| Color rendering | 90+ CRI |
| CBCP | Spot 3469 cd / Medium 2094 cd Wide 1222cd / Flood 803 cd |

Lumen maintenance L80 B10 50,000 Hours

Ordering Code Information

| PRODUCT | INPUT/DIMMING | COLOR TEMPERATURE | FINISH | BEAM ANGLE | COLOR RENDERING |
|--------------------|----------------------------------|--|--|---|-----------------|
| CLSFL 460 | 1E | 27 | WH | S | 9 |
| CLSFL 460, Outdoor | 1E 120V input TRIAC / ELV diming | 27 (2700K) 30 (3000K) 35 (3500K) 40 (4000K) | WH (White) BK (Black) BZ (Bronze) SA (Silver) | S (Spot / 22 deg.) M (Medium / 32 deg.) W (Wide 43 deg.) F (Flood 53 deg.) | 9 (90 CRI+) |

Electrical and Control

| | |
|----------------------|-------------------------------------|
| Input voltage | 120V |
| Control | TRIAC/ELV Dimming |
| Feature | Overload & short circuit protection |

Construction

| | |
|-----------------|--|
| Material | Casting & Extrusion grade Aluminum Alloy |
| Finishes | Black / White / Bronze / Silver |

Optics interchangeable optics

Rating/ Certification/ Warranty

- Dry and damp Locations
- RoHS compliant
- 5 years/ 50,000 hrs warranty
- IP 67

Specification sheet

REV.1

CLSFL460
Outdoor, Line Voltage

Photometrics

6.6W | 90CRI | 3000K

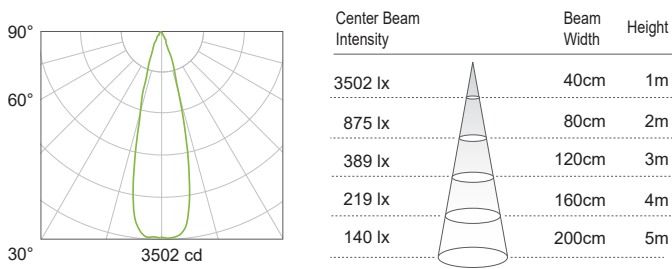
MULTIPLYING FACTORS: (Multiplying Factor is based on 3000K-90+ CRI IES file on website)

| CCT | 2700K-80+ | 3000K-80+ | 3500K-80+ | 4000K-80+ |
|---------|-----------|-----------|-----------|-----------|
| Factors | 1.12 | 1.15 | 1.17 | 1.22 |

| CCT | 2700K-90+ | 3000K-90+ | 3500K-90+ | 4000K-90+ |
|---------|-----------|-----------|-----------|-----------|
| Factors | 0.97 | 1.0 | 1.04 | 1.04 |

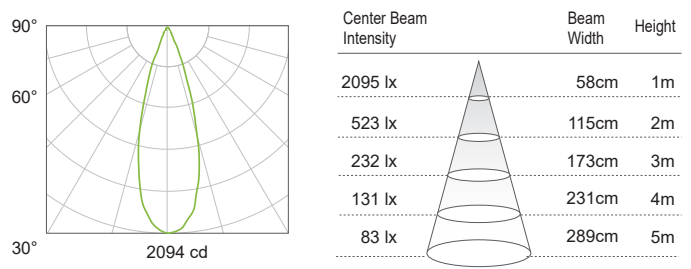
Spot 22°

Delivered Output : 661 lm | CBCP : 3469 cd | Beam Angle : 22°



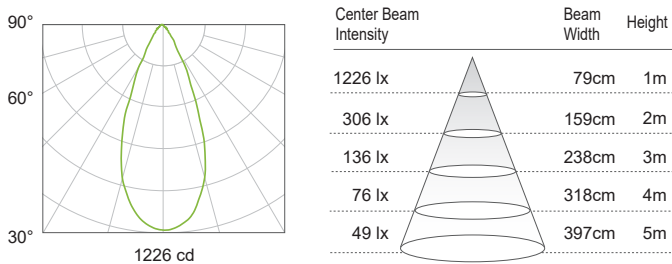
Medium 32°

Delivered Output : 676 lm | CBCP : 2094 cd | Beam Angle : 32°



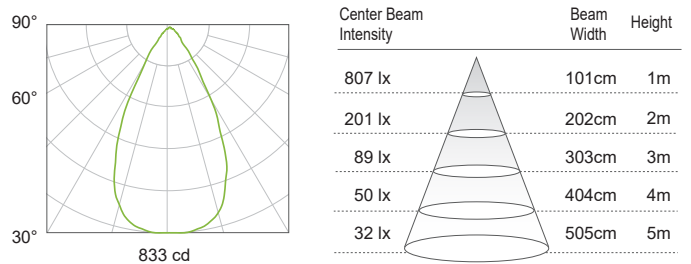
Wide 43°

Delivered Output : 657 lm | CBCP : 1222 cd | Beam Angle : 43°

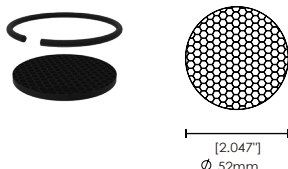

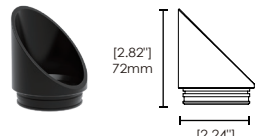


Flood 53°

Delivered Output : 653 lm | CBCP : 803 cd | Beam Angle : 53°



Accessory

| PRODUCT | PRODUCT | FINISH | PRODUCT | FINISH |
|---|---|---|---|---|
| CLSFL4HCL Honey Comb Louver kit | FL400 SAG Shorter Angle snoot | WH WH (White) BK (Black) BZ (Bronze) SA (Silver) | FL400 LAG Long Angle snoot | WH WH (White) BK (Black) BZ (Bronze) SA (Silver) |
|  |  | |  | |