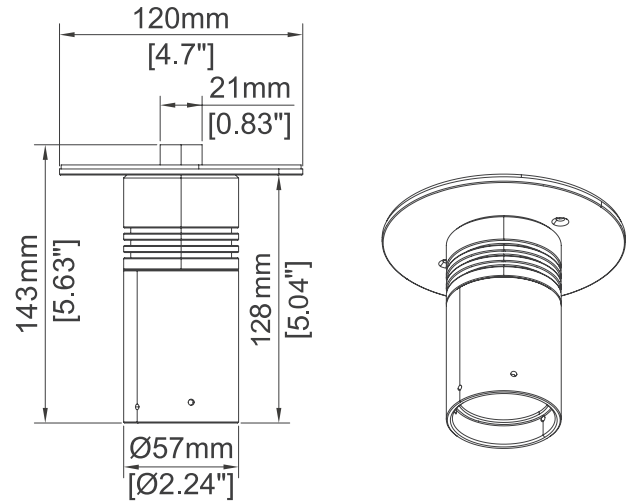
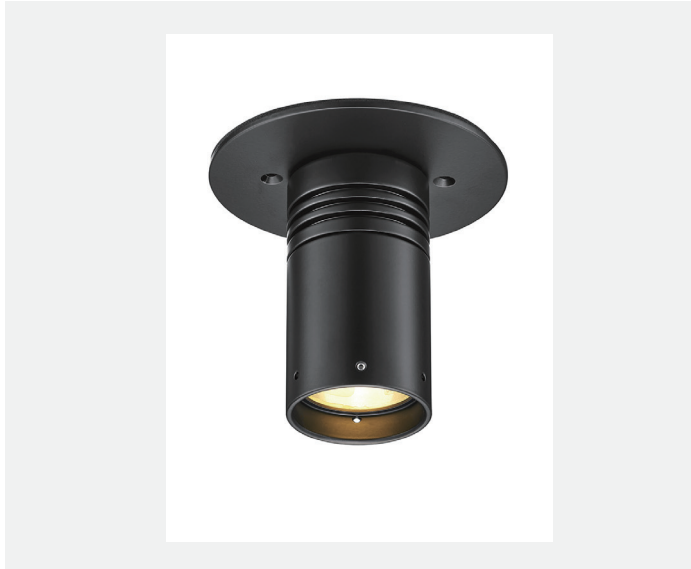


Specification sheet

REV.1

CLSFL450
Outdoor, Line Voltage



Description

Elevate your outdoor space with MACRON Light's extensive of lighting solutions. From ceiling surface, wall surface-mounted, and even floor surface-mounted options. We promised waterproof IP67, outdoor-rated powder coat finishes and 4 different beam angles. We have the perfect fixture for your outdoor needs.

Features

| | |
|--------------------------|---|
| LED | Bridgelux V10 |
| Color temperature | 2700K/ 3000K/ 3500K/ 4000K |
| Optics | Spot 22° / Medium 32° / Wide 43° / Flood 53° |
| Driver | Integrated class 2 driver, power factor >0.90 Output current 150mA |

Performance

| | |
|--------------------------|---|
| Delivered output | Up to >600lm(90+ CRI) |
| Power consumption | 6.5W , >95LM/W |
| Color rendering | 90+ CRI |
| CBCP | Spot 3469 cd / Medium 2094 cd Wide 1222cd / Flood 803 cd |

Lumen maintenance L80 B10 50,000 Hours

Ordering Code Information

| PRODUCT | INPUT/DIMMING | COLOR TEMPERATURE | FINISH | BEAM ANGLE | COLOR RENDERING |
|--------------------|----------------------------------|--|--|---|-----------------|
| CLSFL 450 | 1E | 27 | WH | S | 9 |
| CLSFL 450, Outdoor | 1E 120V input TRIAC / ELV diming | 27 (2700K) 30 (3000K) 35 (3500K) 40 (4000K) | WH (White) BK (Black) BZ (Bronze) SA (Silver) | S (Spot / 22 deg.) M (Medium / 32 deg.) W (Wide 43 deg.) F (Flood 53 deg.) | 9 (90 CRI+) |

Electrical and Control

| | |
|----------------------|-------------------------------------|
| Input voltage | 120V |
| Control | TRIAC/ELV Dimming |
| Feature | Overload & short circuit protection |

Construction

| | |
|-----------------|--|
| Material | Casting & Extrusion grade Aluminum Alloy |
| Finishes | Black / White / Bronze / Silver |

Optics interchangeable optics

Rating/ Certification/ Warranty

- Dry and damp Locations
- RoHS compliant
- 5 years/ 50,000 hrs warranty
- IP 67

Specification sheet

REV.1

Photometrics

6.6W | 90CRI | 3000K

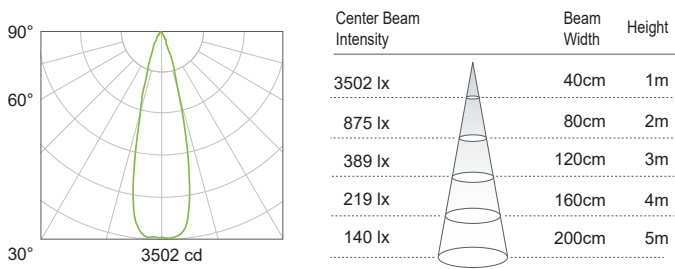
MULTIPLYING FACTORS: (Multiplying Factor is based on 3000K-90+ CRI IES file on website)

| CCT | 2700K-80+ | 3000K-80+ | 3500K-80+ | 4000K-80+ |
|---------|-----------|-----------|-----------|-----------|
| Factors | 1.12 | 1.15 | 1.17 | 1.22 |

| CCT | 2700K-90+ | 3000K-90+ | 3500K-90+ | 4000K-90+ |
|---------|-----------|-----------|-----------|-----------|
| Factors | 0.97 | 1.0 | 1.04 | 1.04 |

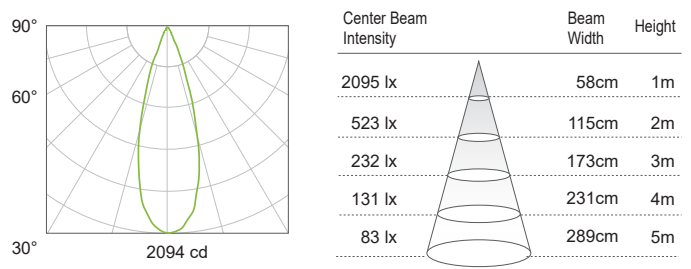
Spot 22°

Delivered Ourput : 661 lm | CBCP : 3469 cd | Beam Angle : 22°



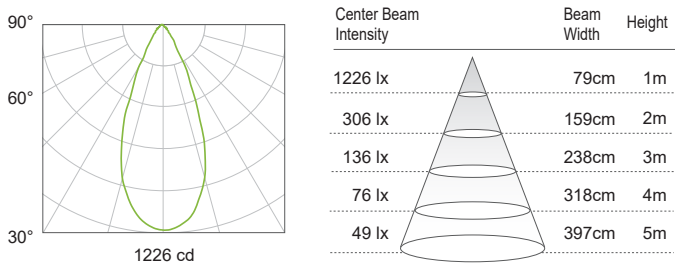
Medium 32°

Delivered Ourput : 676 lm | CBCP : 2094 cd | Beam Angle : 32°



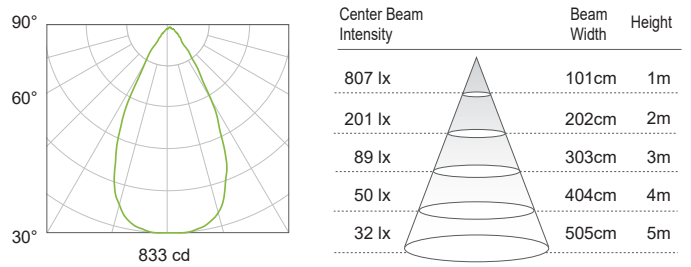
Wide 43°

Delivered Ourput : 657 lm | CBCP : 1222 cd | Beam Angle : 43°



Flood 53°

Delivered Ourput : 653 lm | CBCP : 803 cd | Beam Angle : 53°

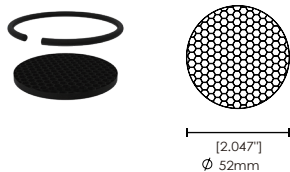


Accessory

PRODUCT

CLSFL4HCL

Honey Comb Louver kit



PRODUCT

FL400 SAG

Shorter Angle snoot



FINISH

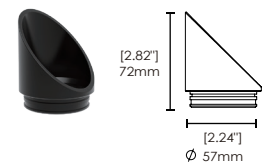
WH

WH (White)
BK (Black)
BZ (Bronze)
SA (Silver)

PRODUCT

FL400 LAG

Long Angle snoot



FINISH

WH

WH (White)
BK (Black)
BZ (Bronze)
SA (Silver)